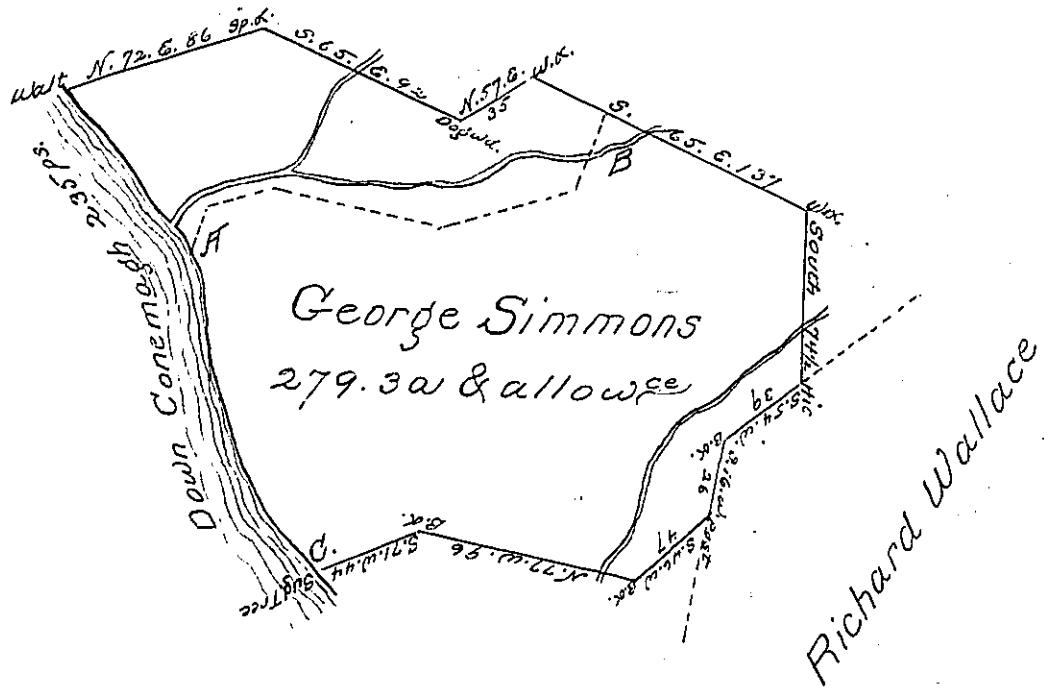


Courses & Distances
down the River

N. 49. w. 23
N. 34. w. 37
N. 12. w. 96
N. 42. w. 79
235

Uact. Land



Survey'd to George Simmons on the 14th day of April 1786, the above described tract of Two hundred & seventy nine acres & a quarter of an acre & the usual allowance of six pcent. Situate on the west side of Conemagh River about six miles from the mouth of Boyalhannon & on the mouth of Elder's Run bounded by Conemagh & lands of Mr. Elder in Westmoreland County. By warrant of the 23d. October 1784

Joshua Elder D.S.

A. B. The principal part of this tract, as represented by the dotted lines & the letters A, B & C, was survey'd and returned to John Bee by warrant of the 2d. Feby. 1785, before Geo. Simmons's warrant came to hand.

J. E.

John Lukens Esqr. S. Genl.

IN TESTIMONY that the above is a copy of the original remaining on file in the Department of Internal Affairs of Pennsylvania, made conformably to an Act of Assembly approved the 16th day of February, 1833, I have hereunto set my Hand and caused the Seal of said Department to be affixed at Harrisburg, this seventh day of May 1901

Jameow Latta
Secretary of Internal Affairs.